



Tattershall Bulletin

1st December 2023



Welcome to our weekly bulletin where we will share dates, reminders, requests and most importantly, our Celebration Assembly awards.

Dates for your diary.....

4th December	Class 4 Showcase 2:45–3:15pm
6th December	Class 3 Showcase 2:45–3:15pm
7th December	Class 5 Showcase 2:45–3:15pm
11th December	Last week for After School Clubs
12th December	KS1 Christmas performances
13th December	Class 6 Showcase 2:45–3:15pm
14th December	Christmas Lunch in School & Wear a Christmas Jumper Day
15th December	KS2 Wow afternoon 2.15pm
18th December	Christmas Chocolate Bingo
19th December	Pantomime 'Snow White' leaving school at 8.30am (see letter sent home)
20th December	KS2 Carol Concert 9am
20th December	End of Term
3rd January	Term 3 Begins

House Team Points

Newton

158

Banks

103

Tennyson

133

Franklin

92

Well done everyone!

Whole School Attendance this term to date is 93%
Our target is....at least 97%

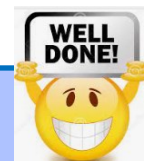
Email:
enquiries@tattershallprimary
.lincs.sch.uk



Tattershall Primary School
Believe, Achieve, Succeed



@TeamTattershall



Celebration Assembly Awards

Class 1	Kirsa	Taking an interest in the stick puppet shows the other children have been doing
	Dakota	Working hard on her number ordering in Maths
Class 2	Esmee	For her amazing final sentence for our story.
	Filip	For his excellent knowledge of the Great Fire of London.
Class 3	Logan	For remembering his lines and saying them confidently
	Maddison	Artistic skills during painting
Class 4	Riley	For generating some lovely ideas in our sentence stacking lessons.
	Millie	For persevering with a new method in multiplication.
Class 5	Sophie M	Excellent coding skills
	Albert B	Excellent understanding for short division in Maths
Class 6	Billy	For his super work with comprehension this week.
	Jacob	For being really confident with his decimal learning.

Happy Birthday this week to...

Class 2 - Joshua S
Class 3 - Filip



Believe, Achieve, Succeed

Email:
enquiries@tattershallprimary
.lincs.sch.uk



@TeamTattershall

Showcase Days

These events will gift you the opportunity to gain insight into the curriculum covered, the skills developed, and the progress made by your child. We kindly request that you mark your calendars for the designated dates of the Showcase Events (see letter previously sent home and diary dates on the newsletter). We understand that schedules can be tight, but your involvement in these events will profoundly impact and enhance your child's educational journey.



Food Shopping Vouchers

If your child is eligible for Free School Meals your child will receive £75 of shopping vouchers for the Christmas holiday period this week. We have notified parents via email. If you receive benefit payments your child may be eligible for free school meals throughout their schooling.

Please check here: www.lincolnshire.gov.uk/schools-and-education/free-school-meals/ or contact

Lincolnshire County Council Free School Meals Team on 01522 782030 to check whether your child is eligible. (Please note free school meal eligibility is separate to Universal free school meals which all KS1 children are entitled to until KS2.)

WEAR A CHRISTMAS JUMPER TO SCHOOL DAY



Wear a Christmas jumper with school uniform

Thursday 14th December

Donations are not needed

Pantomime

We have organised for all our children to go and watch an exciting, live pantomime performance.

The performance is 'Snow White' at the Embassy Theatre, Skegness, on Tuesday 19th December.

(See email previously sent home)
Thank you for the generous donations we have received so far.

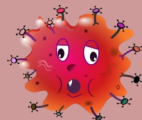


Illness

We want every child to be in school every day. However, we understand that children become unwell. Please be assured that if your child comes to school and is too unwell to manage the day we will always call you.

There are some instances where children have to stay at home during / following an illness for a minimum amount of time, as advised by Public Health England. For example, if your child has sickness and diarrhoea they must remain home until 48 hours have passed from their last episode. The guidance schools follow can be found here:

[Public Health Guidance for Schools](#)



Christmas Chocolate Bingo! Monday 18th December

Refreshments and Raffle
Doors open 5pm Eyes down 5.15pm,
Come along and join in the fun

All children must be accompanied by an adult

Bingo Books: Full £2.50
Half £1.50

